



MKH 8050

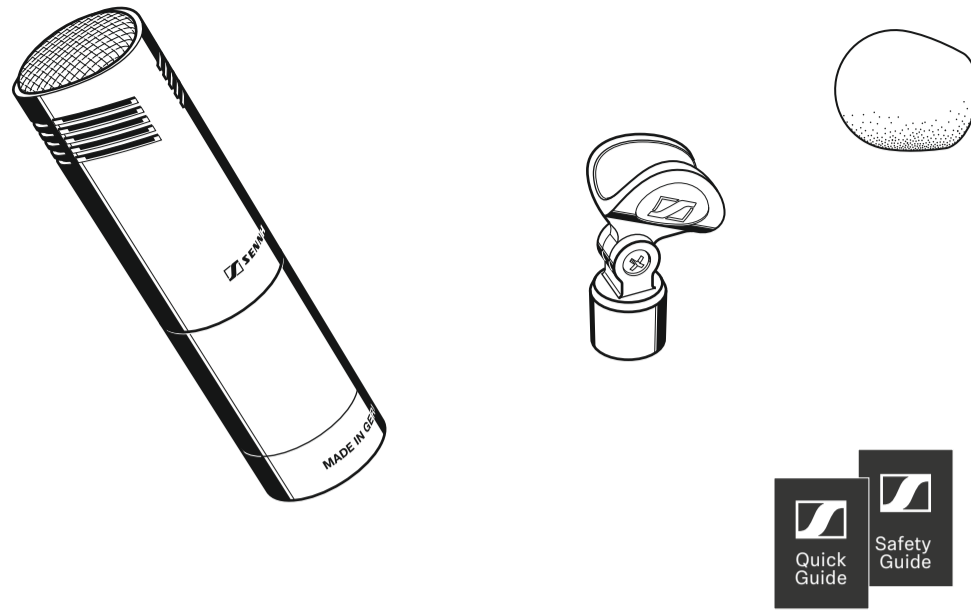
Quick Guide
 Kurzanleitung
 Guide rapide
 Guida rapida
 Guía de inicio rápido
 Guia rápido
 Beknopte handleiding
 Krótka instrukcja obsługi
 Snabbguide

Kort vejledning
 Pikaohje
 Γρήγορος οδηγός
 Kısa Kılavuz
 Краткая инструкция
 快速指南
 快速使用指南
 クイックガイド
 퀵 가이드

SENNHEISER

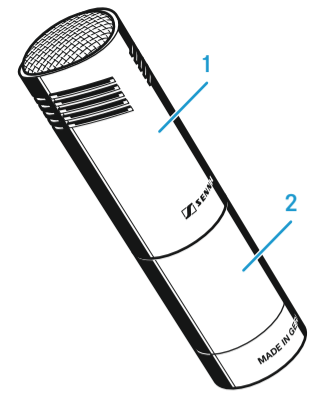
Sennheiser electronic GmbH & Co. KG
 Am Labor 1, 30900 Wedemark, Germany
 www.sennheiser.com
 Printed in Germany, Publ. 07/23 581392/A04

In the box

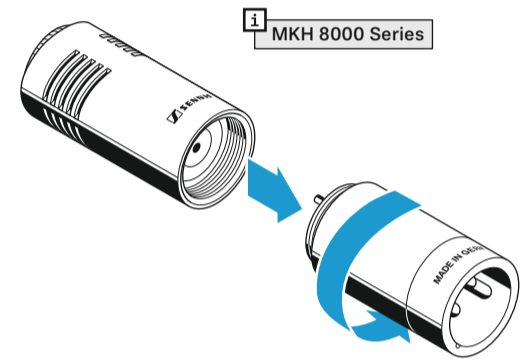
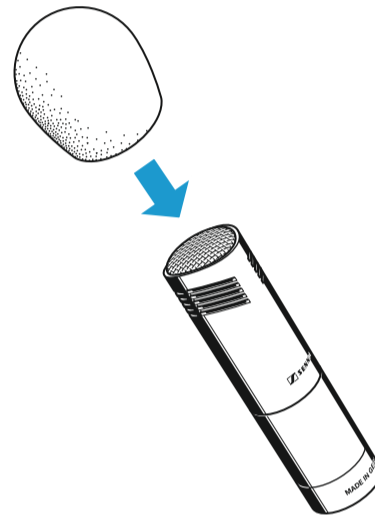
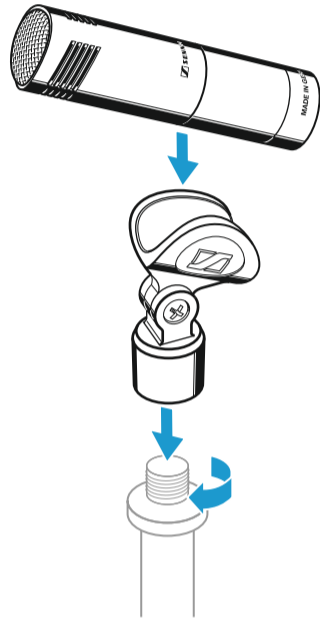


Overview

- 1 Microphone head
- 2 XLR module

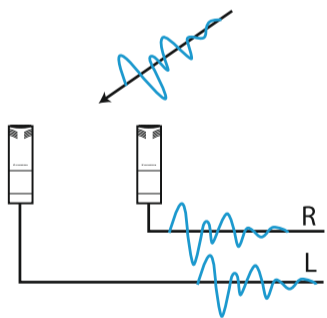


Setup

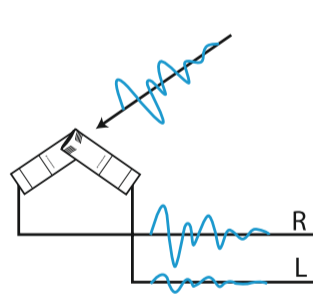


Stereo recording

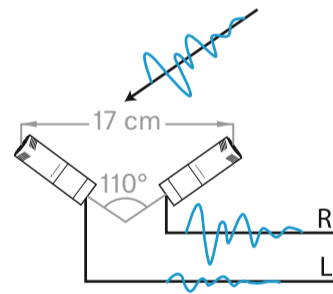
Time-of-arrival stereo (AB):
 (almost) only time-of-arrival differences



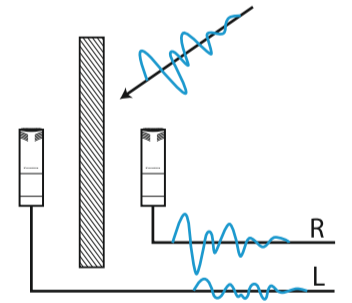
Intensity stereo (XY):
 only sound pressure level differences



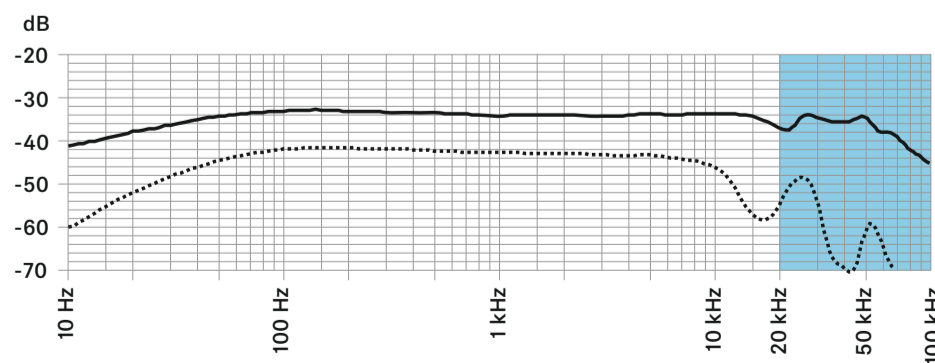
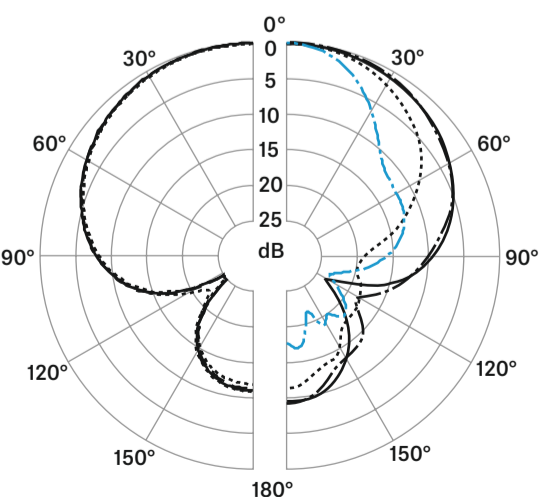
Equivalence or mixed stereo (here: ORTF):
 sound pressure level and time-of-arrival differences



Baffle stereo (here: OSS):
 sound pressure level, time-of-arrival and spectral differences with off-axis sound



Polar pattern and frequency response



125 Hz
 250 Hz - - -
 500 Hz ———
 1,000 Hz

2,000 Hz

4,000 Hz ———

8,000 Hz - - -

16,000 Hz



32,000 Hz - · - · -

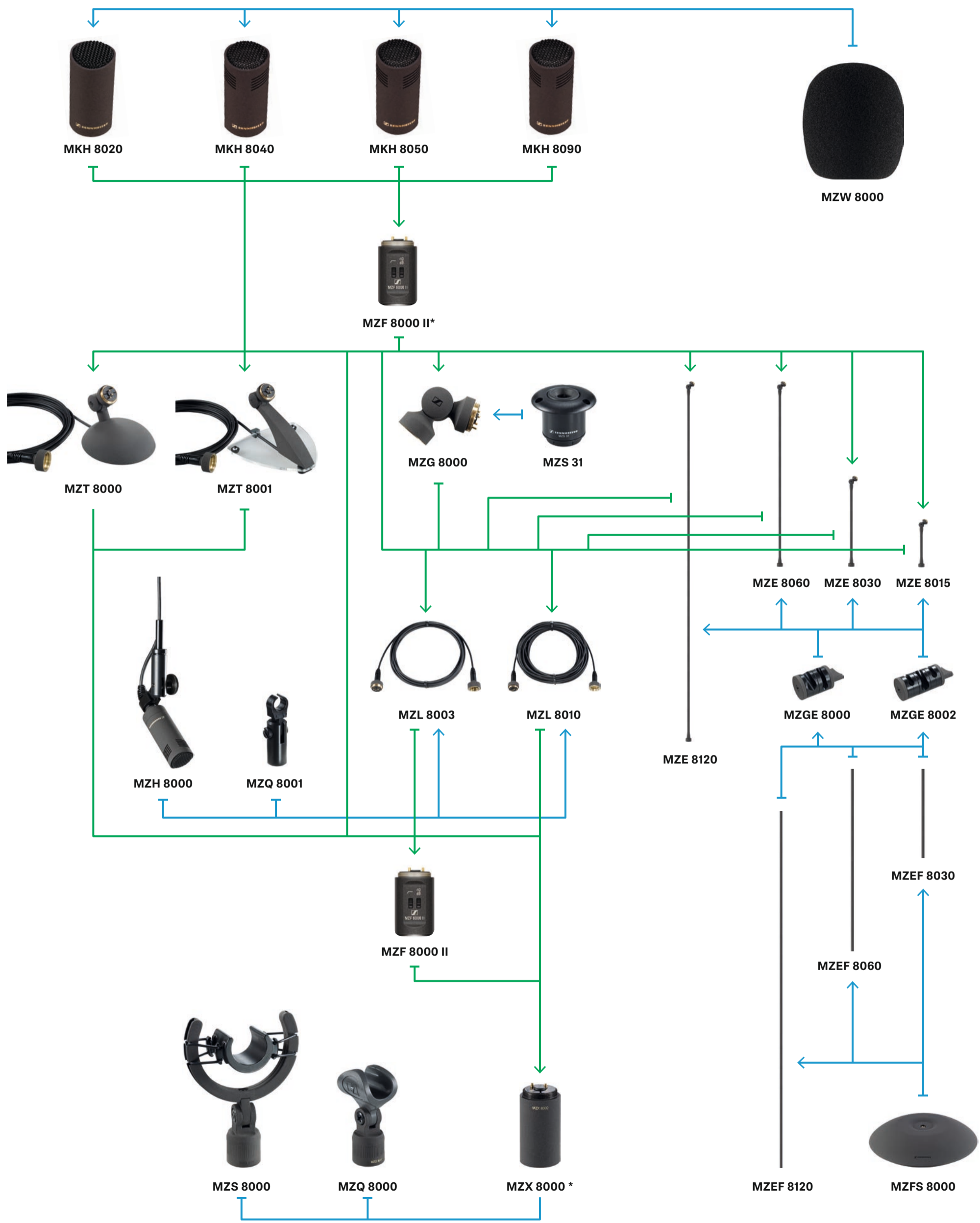
..... 90°
 ——— 0°

Specifications

Pick-up pattern	super-cardioid
Frequency response	30 - 50,000 Hz
Sensitivity	-34 dBV/Pa (31 mV/Pa) with MZF 8000 II -44 dBV/Pa (10 mV/Pa)
Max. SPL	142 dB with MZF 8000 II 137 dB
Equivalent noise level	13 dB(A) 22 dB (CCIR)
Phantom powering	48 V ±4 V (P48, IEC 61938)
Current consumption	3.3 mA
Diameter	approx. 19 mm
Length	approx. 41 mm with MZF 8000 II approx. 75 mm
Weight	approx. 25 g with MZF 8000 II approx. 55 g
Operating temperature	-10 °C to 60 °C

Microphone and accessories overview

audio signal 
mounting accessories 



*Screw filter module MZF 8000 II at suitable place between microphone head and XLR module.