



e 901



[www.sennheiser.com/download](http://www.sennheiser.com/download)

Quick Guide  
 Kurzanleitung  
 Guide rapide  
 Guida rapida  
 Guía de inicio rápido  
 Guia rápido  
 Beknopte handleiding  
 Krótka instrukcja obsługi  
 Snabbguide

Kvikstartguide  
 Pikaohje  
 Γρήγορος οδηγός  
 Kısa Kılavuz  
 Краткая инструкция  
 快速指南  
 快速使用指南  
 クイックガイド  
 퀵 가이드

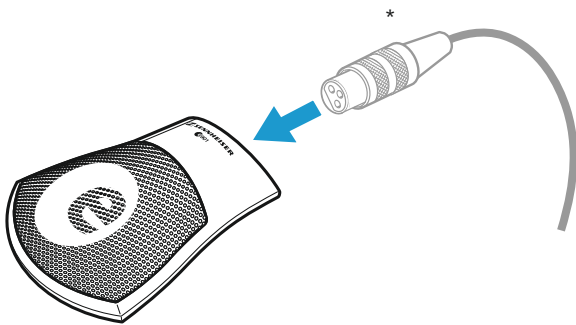
Sennheiser electronic SE & Co. KG

Am Labor 1, 30900 Wedemark, Germany  
[www.sennheiser.com](http://www.sennheiser.com)

Printed in Germany  
Publ. 12/24, 581332/A05

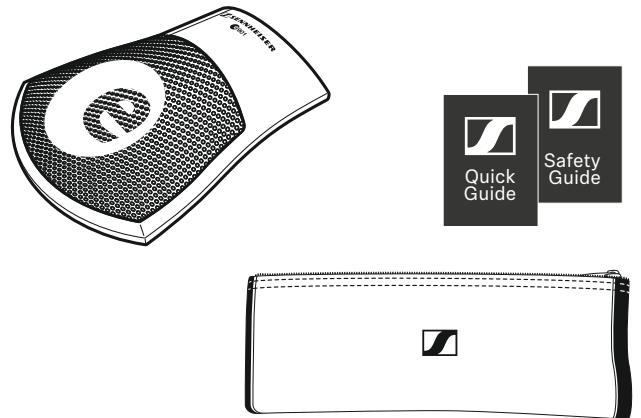
SENNHEISER

### Setup

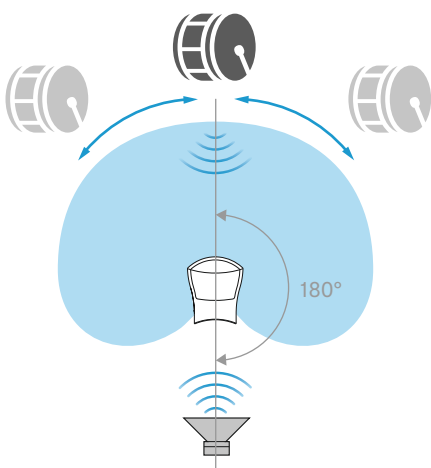
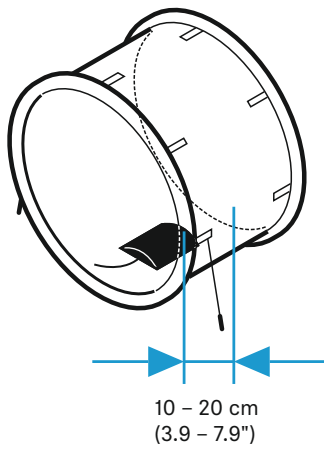
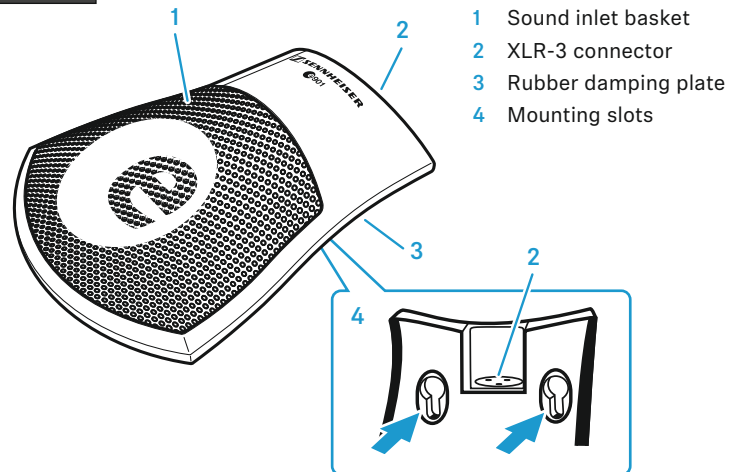


\*XLR-3 cable not included

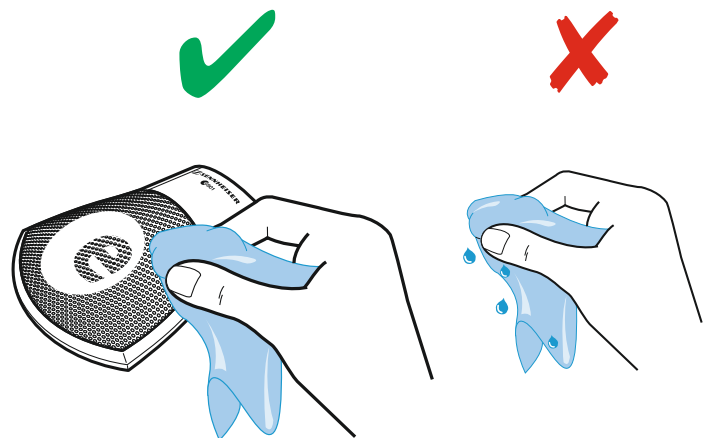
### In the box



### Overview



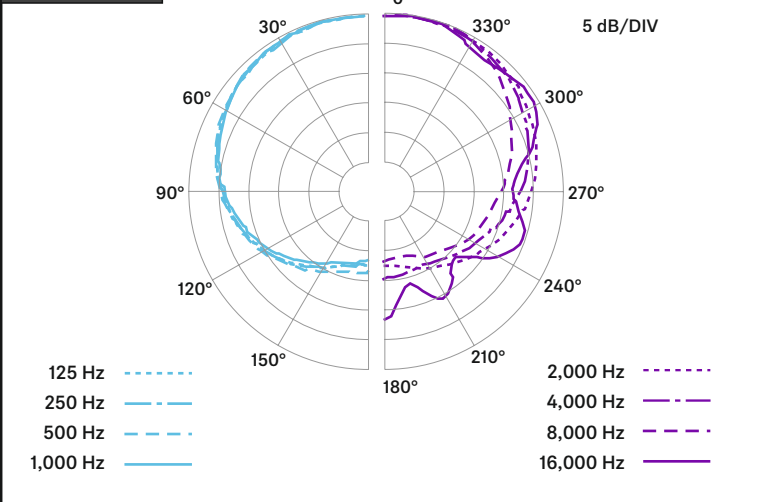
### Cleaning



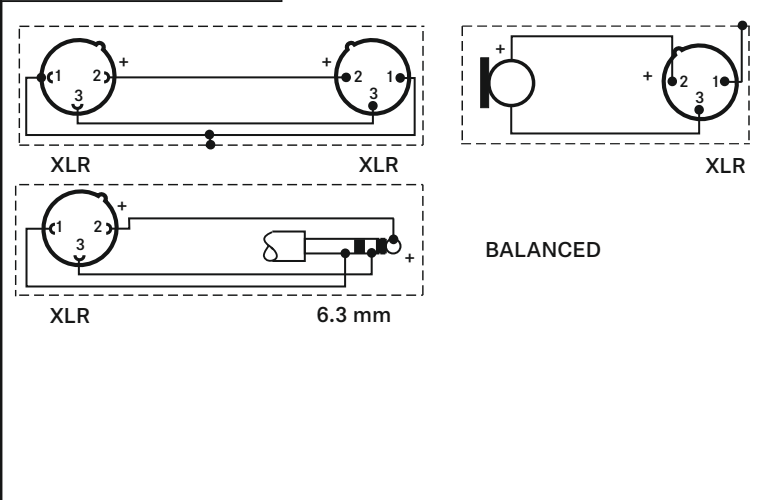
## Specifications

|                            |  |
|----------------------------|--|
| Type                       | pre-polarized condenser boundary microphone        |
| Pick-up pattern            | half cardioid                                      |
| Frequency response         | 20 – 20,000 Hz $\pm$ 2.5 dB deviation to reference |
| Sensitivity                | -66 dBV/Pa (0.5 mV/Pa) $\pm$ 2.5 dB                |
| Nominal impedance          | 50 $\Omega$  |
| Min. terminating impedance | 1 k $\Omega$                                       |
| Power supply               | P48  |
| Current consumption        | 2 mA   |
| Connector                  | XLR-3  |
| Dimensions                 | 125 x 105 x 29 mm                                  |
| Weight                     | 515 g  |

## Polar pattern



## Connector assignment



## Frequency response

