



# ACA 3

- Quick Guide
  - Kurzanleitung
  - Guide de démarrage rapide
  - Guida rapida
  - Instrucciones resumidas
  - Instruções resumidas
  - Beknopte gebruiksaanwijzing
  - Krótką instrukcja obsługi
  - Snabbguide
- Kort vejledning
  - Pikaohje
  - Γρήγορος οδηγός
  - Kisa Kilavuz
  - Краткая инструкция
  - 快速指南
  - 快速使用指南
  - クイックガイド
  - 퀵 가이드

SENNHEISER



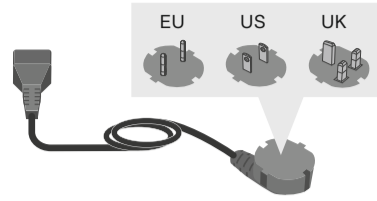
[www.sennheiser.com/download](http://www.sennheiser.com/download)

Sennheiser electronic GmbH & Co. KG

Am Labor 1, 30900 Wedemark, Germany  
[www.sennheiser.com](http://www.sennheiser.com)

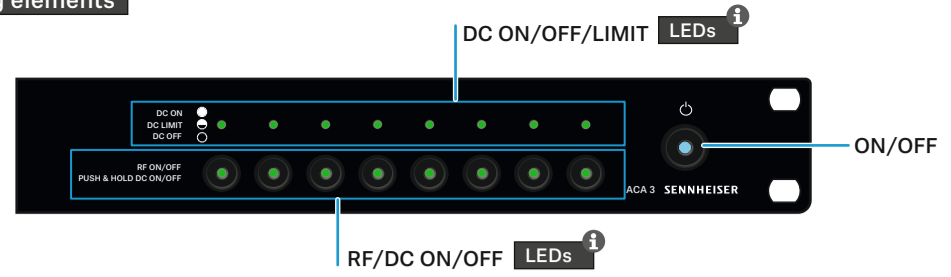
Printed in Germany, Publ. 12/23, 583927/A03

## ACA 3

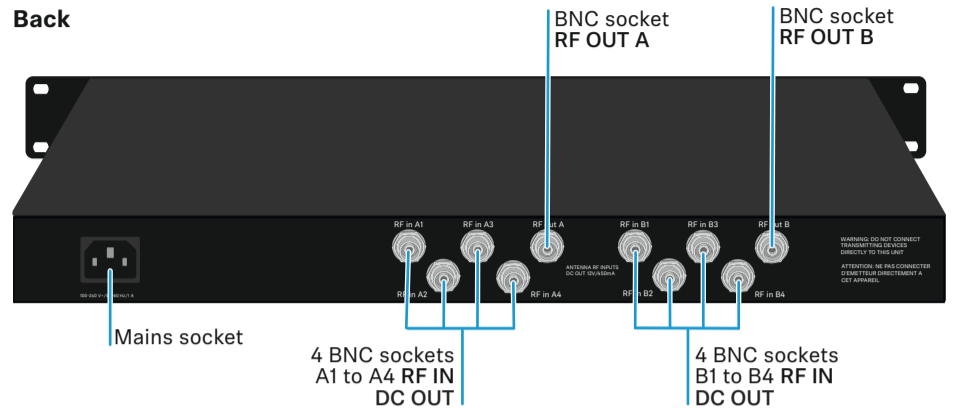


## Operating elements

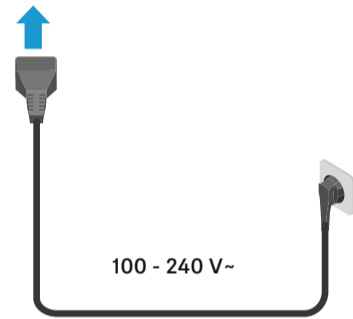
### Front



### Back



## Setup



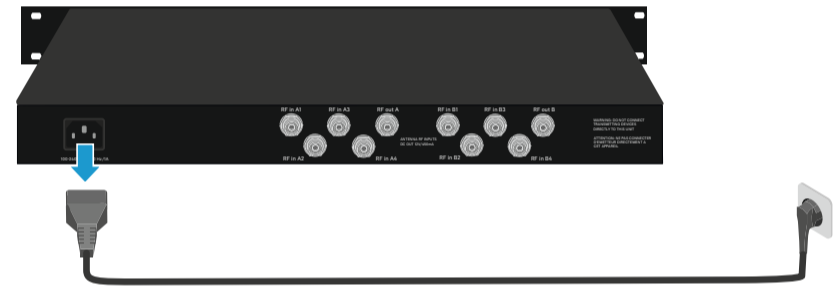
## ON/OFF

### ON/Standby



|        | short     | long     |
|--------|-----------|----------|
| ACA 3  | on        | standby  |
| LED    | on        | blinking |
| LED RF | by memory | off      |
| LED DC | by memory | off      |

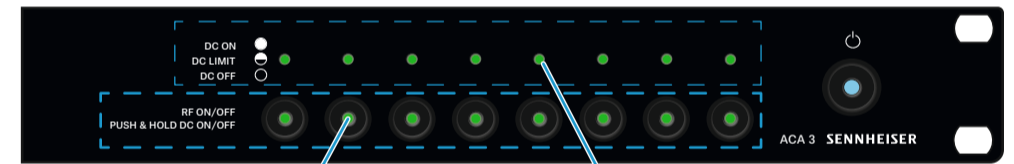
### OFF



## Specifications

|                                    |   |
|------------------------------------|---|
| Frequency range                    | 470 - 798 MHz                                       |
| Gain                               | 0 dB (±3 dB) @ 470-790 MHz                          |
| Output voltage                     | 12 V, 250 mA max (overload protected)               |
| Connector                          | BNC female, 50 Ω                                    |
| Power supply                       | 100-240 V AC / 50-60 Hz / 1A                        |
| RF input                           | +10 dBm max 10 mW / channel                         |
| RF output                          | IP3: >37 dBm (typ.); 1 dB cp: >20 dBm               |
| Specials                           | Channel isolation (when switched OFF): 69 dB (typ.) |
| Operating relative humidity        | 5 to 95%  |
| Operating temperature range        | -10 °C to +40 °C                                    |
| Storage temperature range          | -20 °C bis +70 °C                                   |
| Dimensions (incl. rack mount ears) | approx. 43 x 483 x 205 mm                           |
| Format                             | 19", 1U   |
| Weight (incl. plug, cable)         | approx. 2750 g                                      |

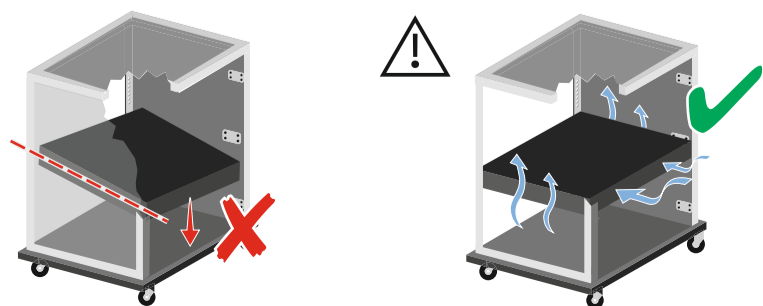
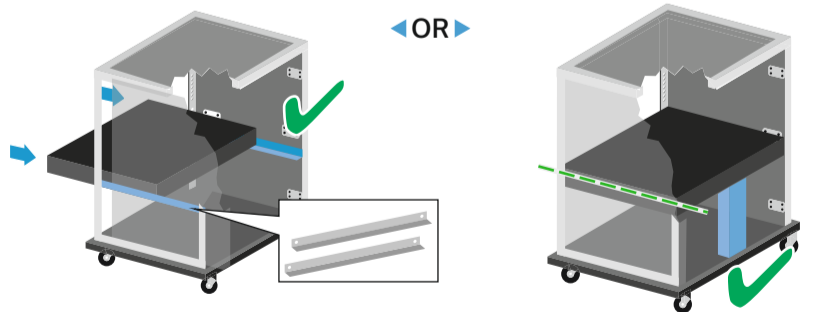
## Operating modes



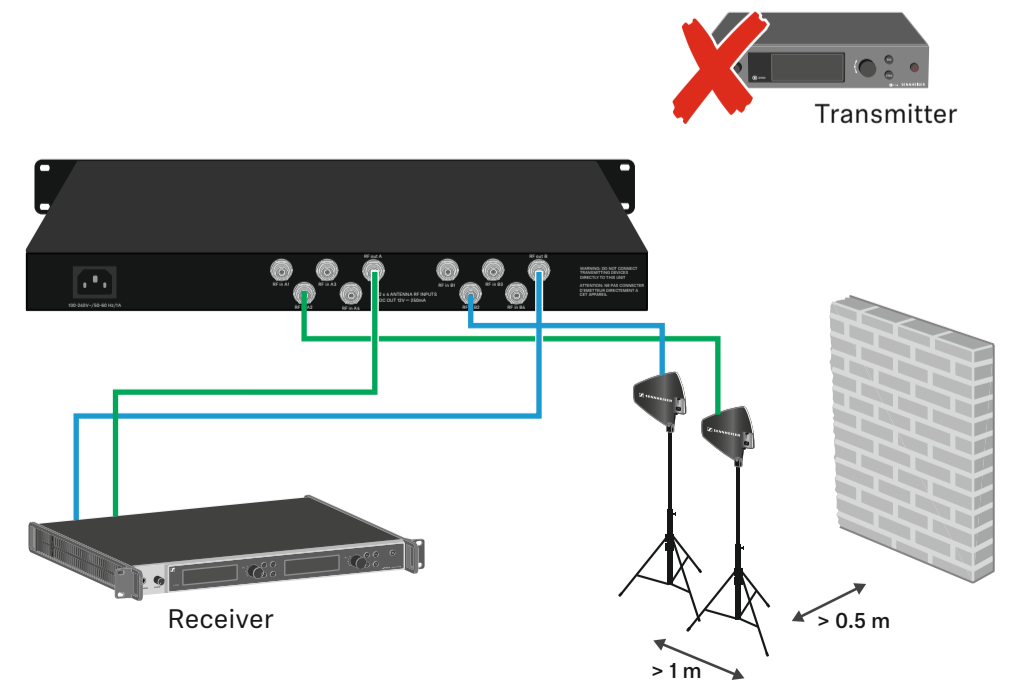
|    | short  | long   |
|----|--------|--------|
| RF | on/off | -      |
| DC | -      | on/off |

| LEDs     | DC    | RF |
|----------|-------|----|
| on       | ✓     | ✓  |
| blinking | LIMIT | -  |
| off      | ✗     | ✗  |

## Setup

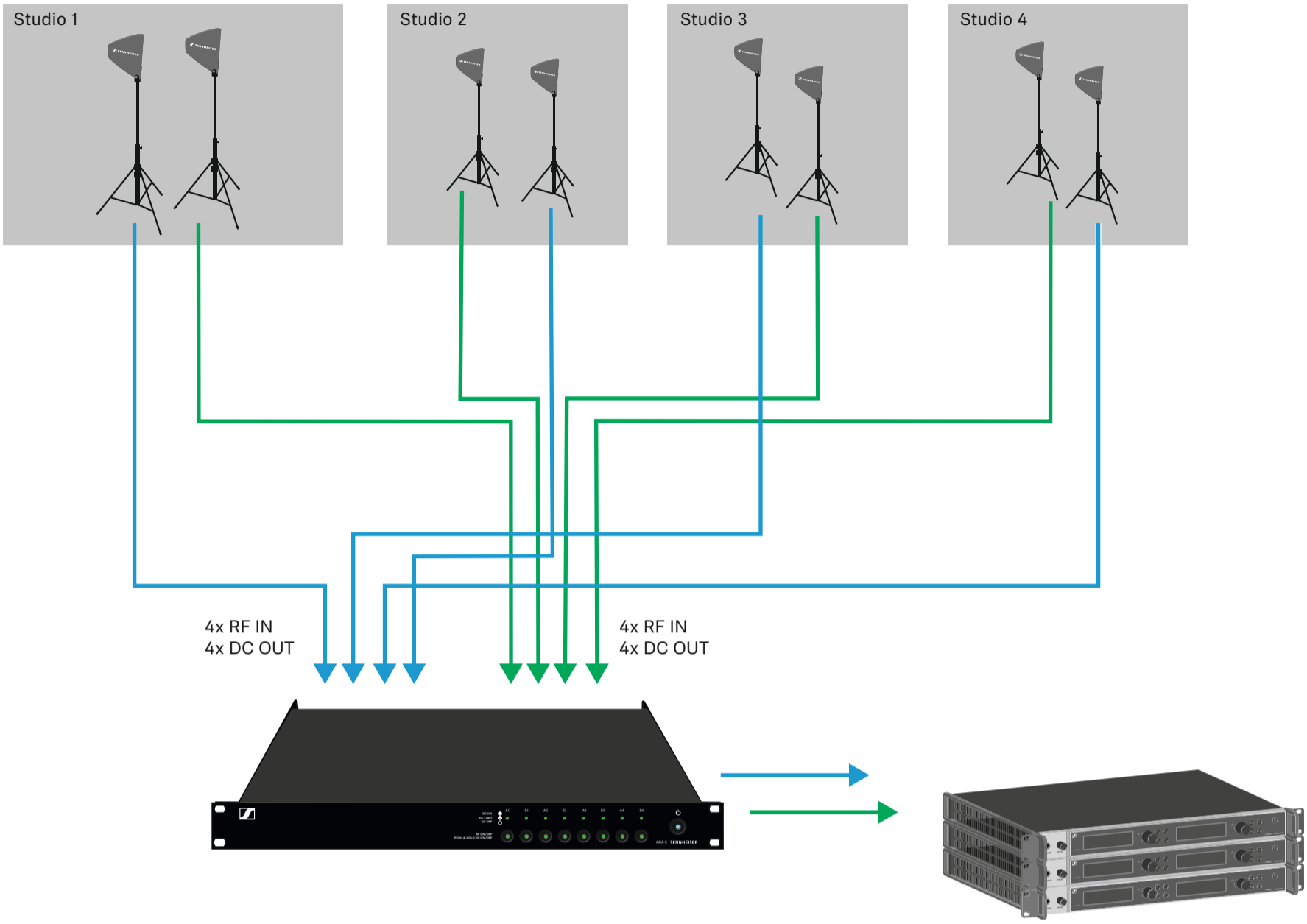


## Connecting devices



Example 1: Studio Complex

RF IN A1 - A4  
RF IN B1 - B4



Example 2: Large Church

RF IN A1 - A4  
RF IN B1 - B4

