



# MMK 965-1



Quick Guide  
 Kurzanleitung  
 Guide de démarrage rapide  
 Guida rapida  
 Instrucciones resumidas  
 Instruções resumidas  
 Beknopte gebruiksaanwijzing  
 Krótka instrukcja obsługi  
 Snabbguide

Kort vejledning  
 Pikaohje  
 Γρήγορος οδηγός  
 Kısa Kılavuz  
 Краткая инструкция  
 快速指南  
 快速使用指南  
 クイックガイド  
 퀵 가이드

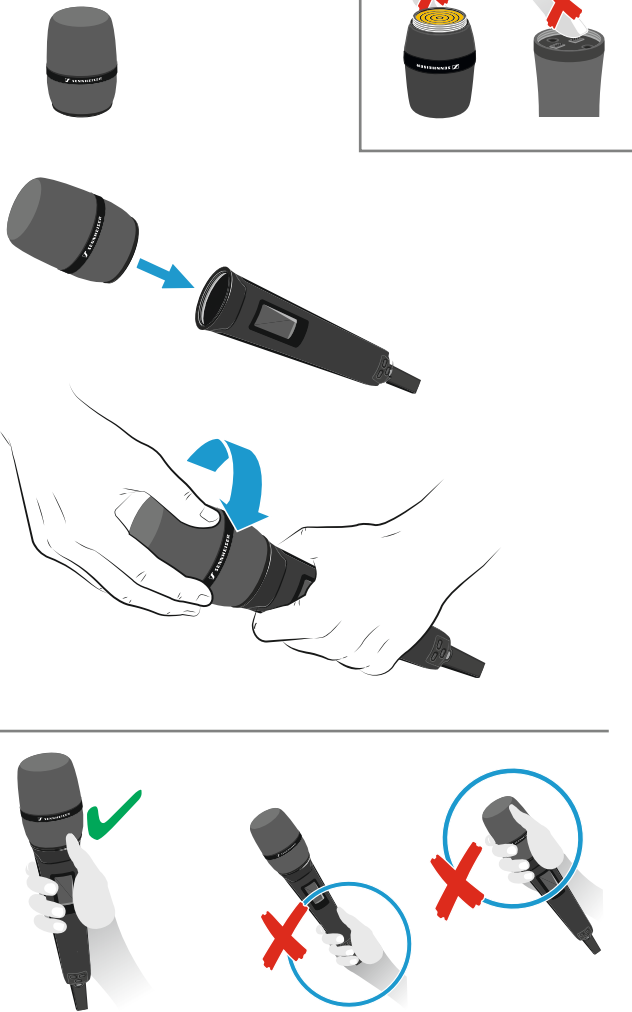
Sennheiser electronic SE & Co. KG

Am Labor 1, 30900 Wedemark, Germany  
www.sennheiser.com

Printed in Germany  
Publ. 11/24, 583922/A03

## SENNHEISER

### Setup

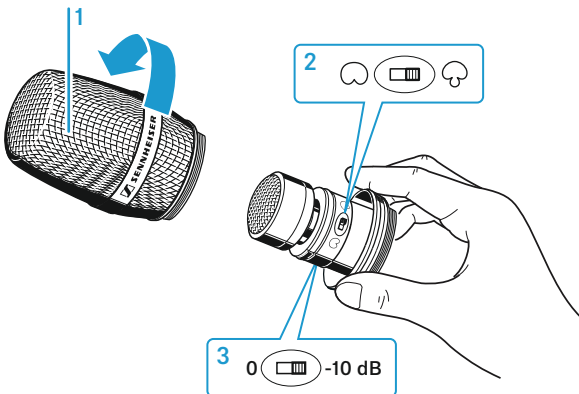




### In the box

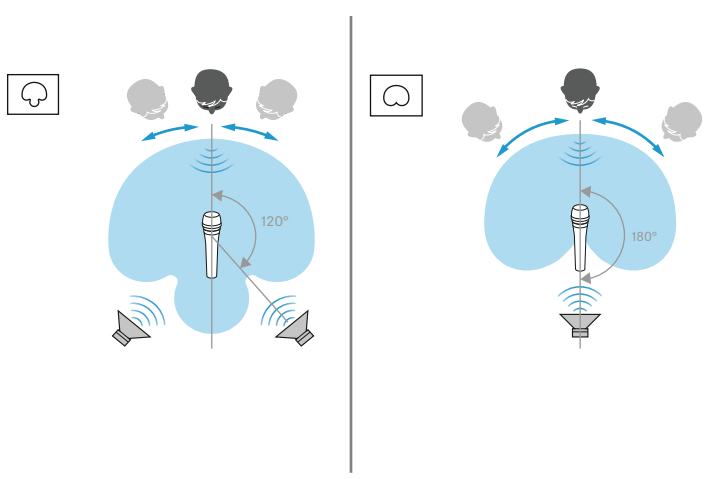


### Compatible with

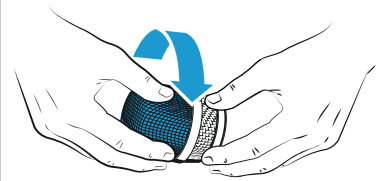
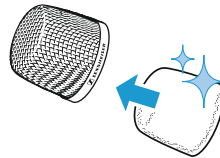
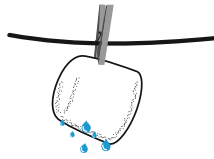
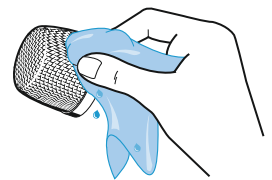
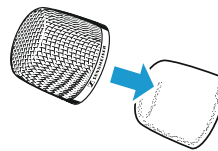
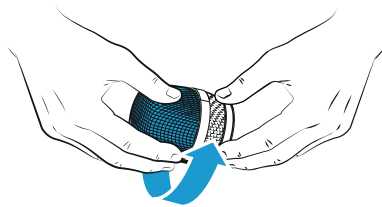
ew G4:	SKM 100 300 500 G4
ew G3:	SKM 100 300 500 G3
2000 series:	SKM 2000
Digital 6000:	SKM 6000
Digital 9000:	SKM 9000



- 1 Sound inlet basket
- 2 Directivity switch  
- 3 Sensitivity switch -10 dB 0 dB



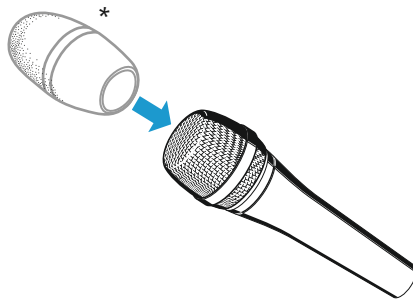
## Cleaning



## Accessories



MZW 5000



-20 dB

\*MZW 5000 not included

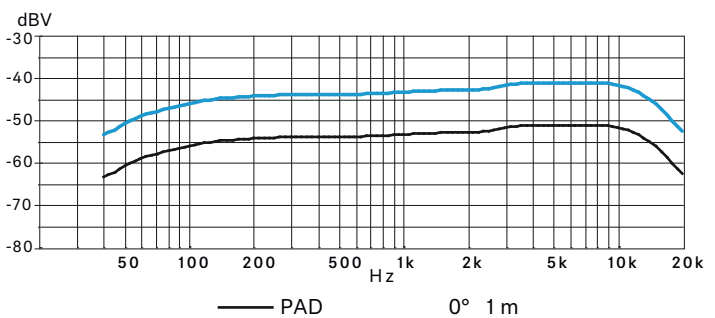
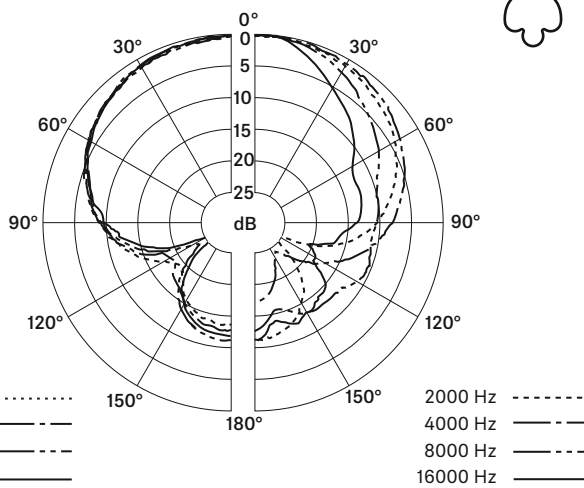
## Specifications

Transducer principle	externally polarized dual diaphragm condenser microphone
Pick-up pattern	cardioid/supercardioid, switchable
Sensitivity	7.0 mV/Pa
with preattenuation	2.2 mV/Pa (factory setting)
Max. SPL at 1 kHz	144 dB
with preattenuation	154 dB factory setting
Dynamic range	126 dB(A)
Diameter of diaphragm	2.54 cm (1")
Frequency response	40 to 20,000 Hz
Equivalent noise level A-weighted	18 dB
Weight	162 g

## Polar pattern and frequency response



supercardioid



cardioid

