



MKH 60-1

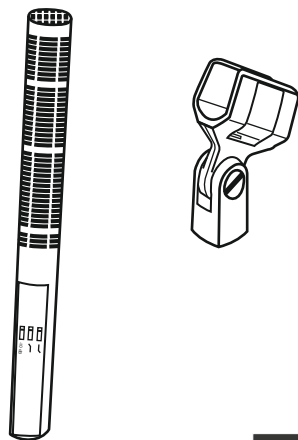
Quick Guide
 Kurzanleitung
 Guide de démarrage rapide
 Guida rapida
 Instrucciones resumidas
 Instruções resumidas
 Beknopte gebruiksaanwijzing
 Krótka instrukcja obsługi
 Snabbguide

Kort vejledning
 Pikaohje
 Γρήγορος οδηγός
 Kısa Kılavuz
 Краткая инструкция
 快速指南
 快速使用指南
 クイックガイド
 퀵 가이드

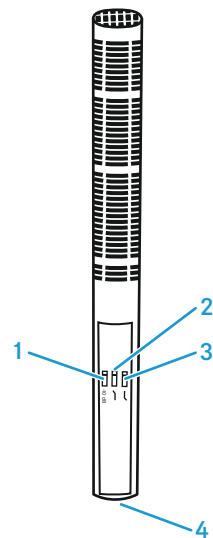


SENNHEISER

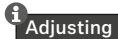
In the box



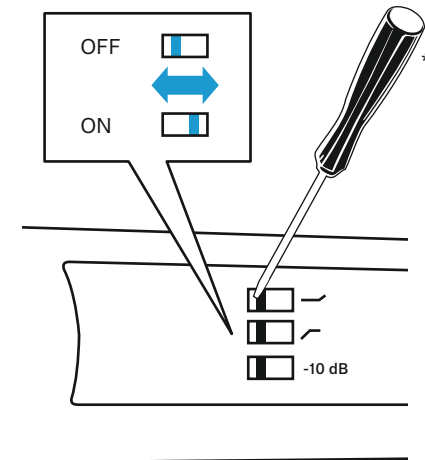
Overview



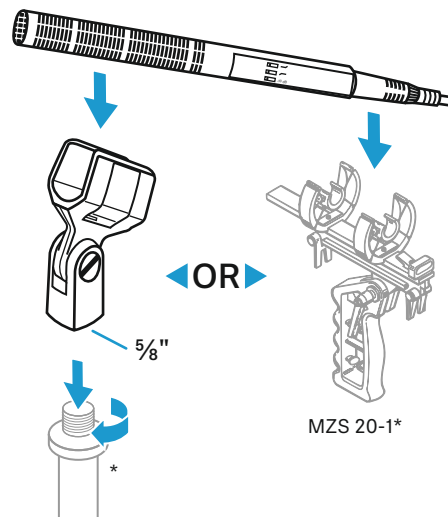
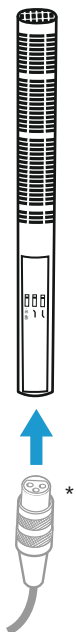
- 1 switch for preattenuation
- 2 switch for roll-off-filter
- 3 switch for presence filter
- 4 XLR-3 connector



Adjusting



Setup



* not included

Accessories

MZS 20-1*
+
MZW 60-1*

+
MZH 60-1*



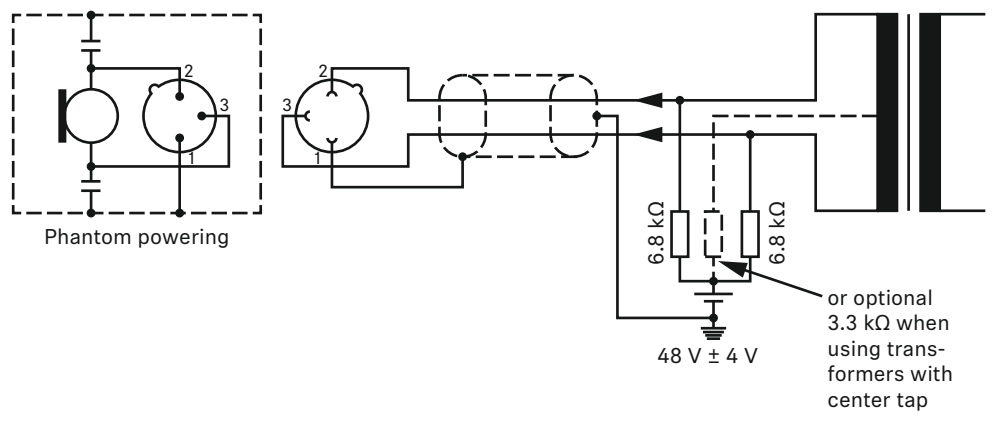
Online at
www.sennheiser.com/download
 Q MKH 60-1_

Sennheiser electronic GmbH & Co. KG

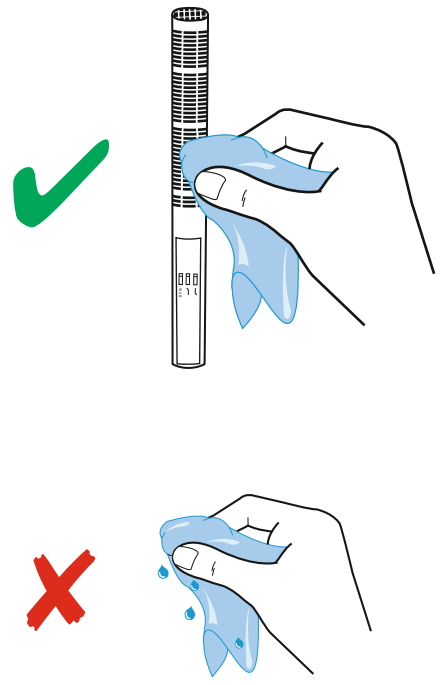
Am Labor 1, 30900 Wedemark, Germany
www.sennheiser.com

Printed in Germany, Publ. 09/19, 583990/A01

Power supply and connections



Cleaning

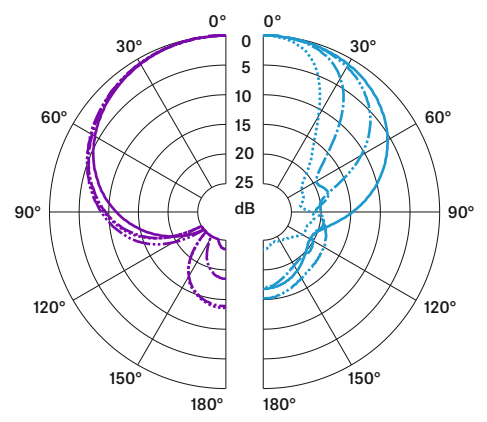


Specifications

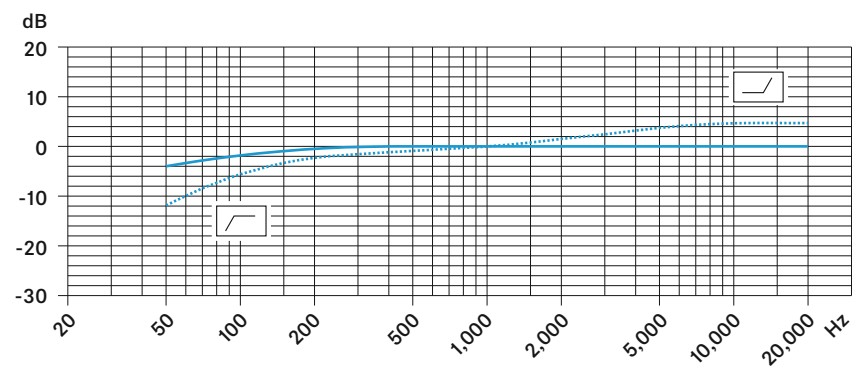
Pick-up pattern	super-cardioid/lobar
Frequency response	50 – 20,000 Hz
Sensitivity (free field, no load, 1 kHz)	40 (12.5) mV/Pa ±1 dB
Max. SPL	125 (134) dB / 1 kHz
Equivalent noise level	
DIN IEC 651	8 (15) dB(A)
CCIR 468-3	18 (26) dB
Nominal impedance	150 Ω
Min. terminating impedance	1 kΩ
Phantom powering	48 V ± 4 V
Current consumption	2 mA
Dimension	∅ 25 x 280 mm
Weight	approx. 150 g

Values in () with attenuator switched on (-10 dB)

Polar pattern and frequency response



- 125 Hz 2,000 Hz ———
- 250 Hz ——— 4,000 Hz - - - - -
- 500 Hz - - - - - 8,000 Hz - · - · - ·
- 1,000 Hz ——— 16,000 Hz ·····



- Effect of switchable roll-off-filter
- Effect of switchable treble emphasis