



MEB 114 MEB 114-S

Quick Guide
 Kurzanleitung
 Guide de démarrage rapide
 Guida rapida
 Instrucciones resumidas
 Instruções resumidas
 Beknopte gebruiksaanwijzing
 Krótka instrukcja obsługi
 Snabbguide

Kort vejledning
 Pikaohje
 Γρήγορος οδηγός
 Kisa Kilavuz
 Краткая инструкция
 快速指南
 快速使用指南
 クイックガイド
 퀵 가이드

SENNHEISER



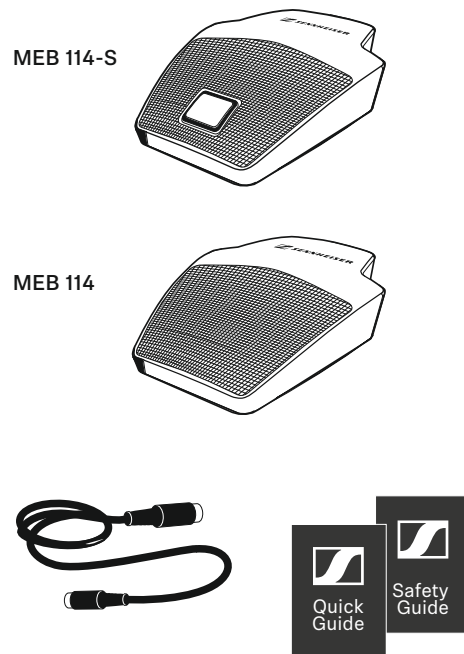
www.sennheiser.com/download

Sennheiser electronic GmbH & Co. KG

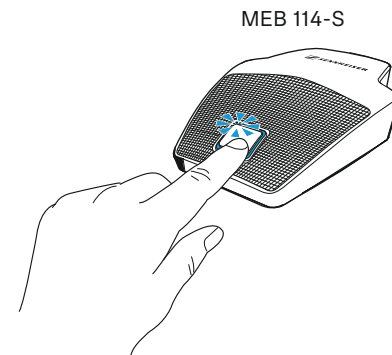
Am Labor 1, 30900 Wedemark, Germany
www.sennheiser.com

Printed in Germany, Publ. 11/23, 549117/A03

In the box



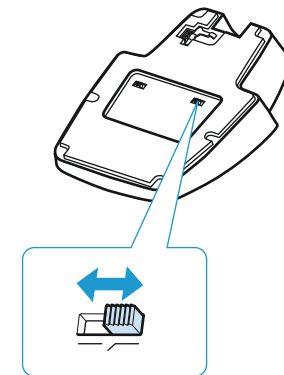
LED status



- lights up green: microphone active
- lights up red*: microphone muted

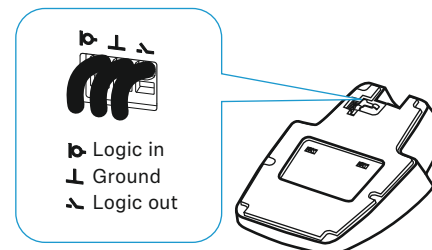
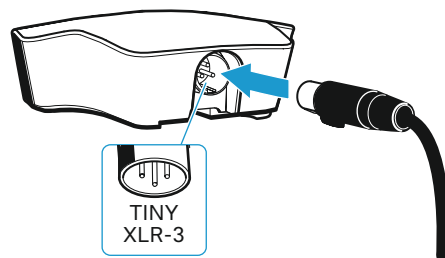
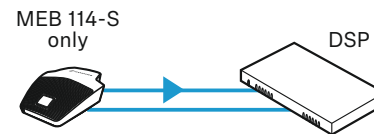
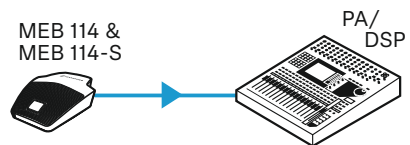
*This function is not supported by all PAs/DSPs.

Low-cut filter

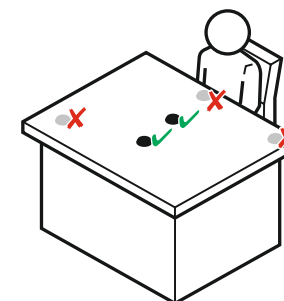
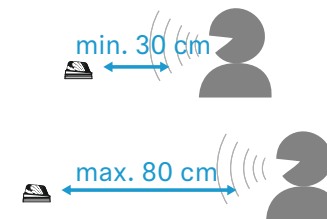


- low cut off
- low cut active (attenuation) cuts of frequencies < 120 Hz

Setup

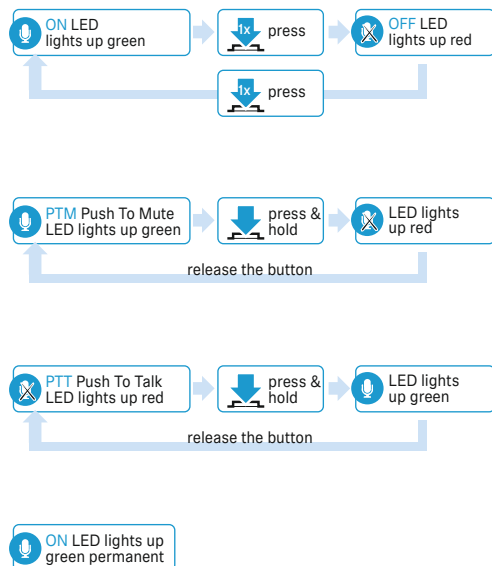
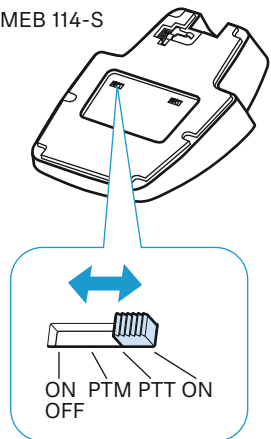


see Instruction manual of the microphone series**



Microphone behavior

MEB 114-S



Specifications

Microphones	MEB 114	MEB 114-S
Pick-up pattern	cardioid	
Frequency response	40 – 20,000 Hz	
Acoustic principle	pressure zone microphone	
Nominal impedance (at 1 kHz)	200 Ω	
Sensitivity	10 mV/Pa	
Max. SPL	140 dB at 1 kHz	
Equivalent noise level (weighted as per CCIR 468-3)	29 dB(A)	
Power supply	48 V phantom power	
Current consumption	1.5 mA	5.3 mA (microphone/ signal light ring: 2.65 mA each)
Connector	tiny XLR-3	
Temperature	operation: -10 °C – +50 °C storage: -25 °C – +70 °C	
Dimensions	85 x 25 x 100 mm	
Weight	approx. 291 g	